

# Environmental Statement: Technical Appendix 6.4 – ZTV Model for Y Wethyr

ES TA 6.4

Development of National Significance

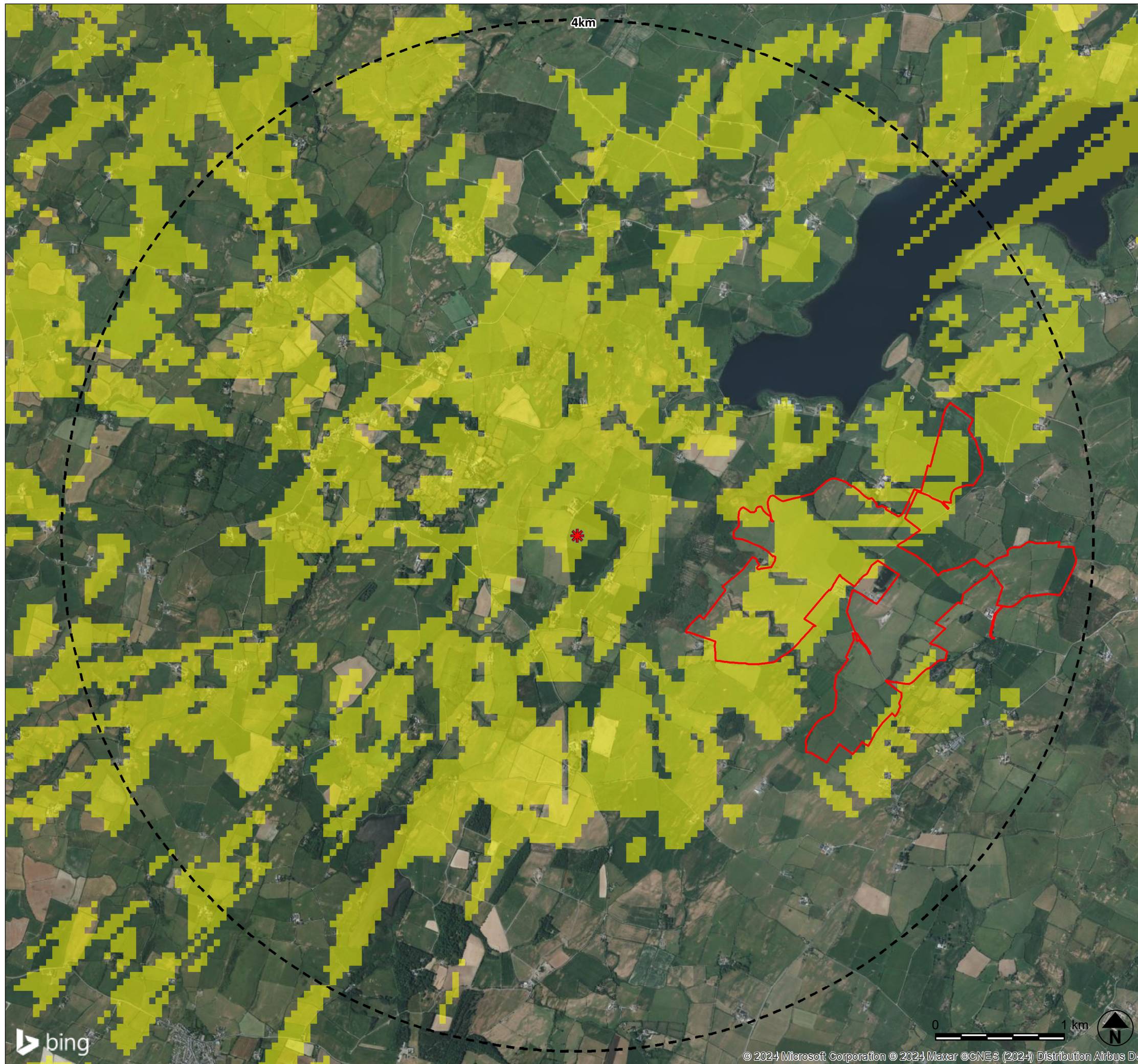
## Alaw Môn Solar Farm

Land west of the B5112, 415m south of Llyn Alaw, 500m east of Llantrisant and 1.5km west of Llannerch-y-Medd, Anglesey

February 2024







**KEY**

- Site Boundary
- ✳ Y Werthyr Hillfort
- 4km Study Area
- Zone of Theoretical Visibility (1.7m)

Screened ZTV Production Information -  
 The ZTV has been produced using multiple datasets to create a DSM (Digital Surface Model). These have been combined together accurately using ESRI GIS software. The following datasets have been used to create the DSM-

- OS Terrain 50 has been used as the base layer.
- OS Open Map Local Woodland and Buildings
- Indicative woodland and building heights are modelled at 15m and 8m respectively
- Viewer height set at 1.7m
- Calculations include earth curvature and light refraction

N.B. This Zone of Theoretical Visibility (ZTV) image illustrates the theoretical extent of where the development may be visible from, assuming 100% atmospheric visibility, and includes the screening effect from vegetation and buildings, based on the assumptions stated above.

Revisions:  
 First Issue- 19/02/2024 JS



Enso Energy Ltd, Unit 1 and 2 Cirencester Office Park,  
 Tetbury Road, Cirencester, GL7 6JJ  
 Tel: 01452764685 Email: enquiries@ensoenergy.co.uk

Project Title:  
**Alaw Môn (Wylfa) Solar Farm**

DRWG Title: **Y Wethyr Hillfort Screened Zone of Theoretical Visibility**

DRWG No: WAM-01-P27	REV: -	Sheet No: -
Drawn by: JS	Checked by: OH	
Scale: 1:30,000 @ A3	Date: 19/02/2024	

